



One-time placement,  
weldable forged lifting  
padeyes engineered and  
certified to meet all ASME  
BTH-1 categories and classes

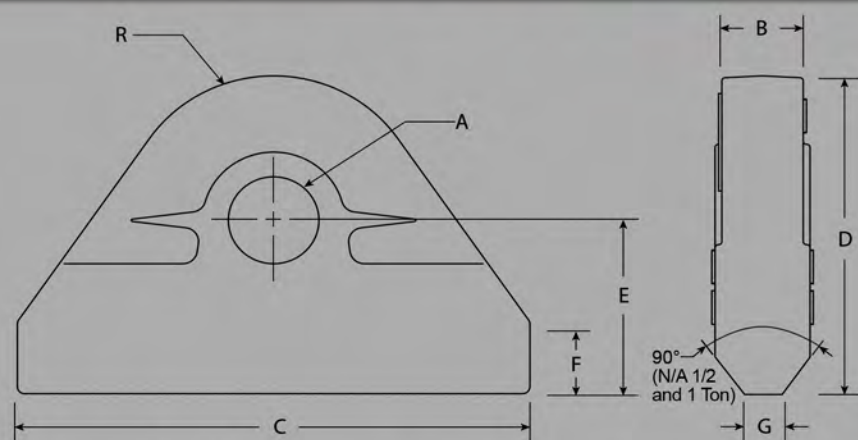
# ENGINEERED & CERTIFIED PADEYES

Available in A36 Steel or Stainless  
Steel in 1/2, 1, 1-1/2, 2, 4-3/4 and  
6-1/2 Ton Ratings

Eliminate the need  
and time to engineer,  
fabricate, machine, and certify  
lifting padeyes. By purchasing these  
one-of-a-kind padeyes, you can have them  
on the shelf ready to weld and speed up delivery,  
testing, and approval of your projects.

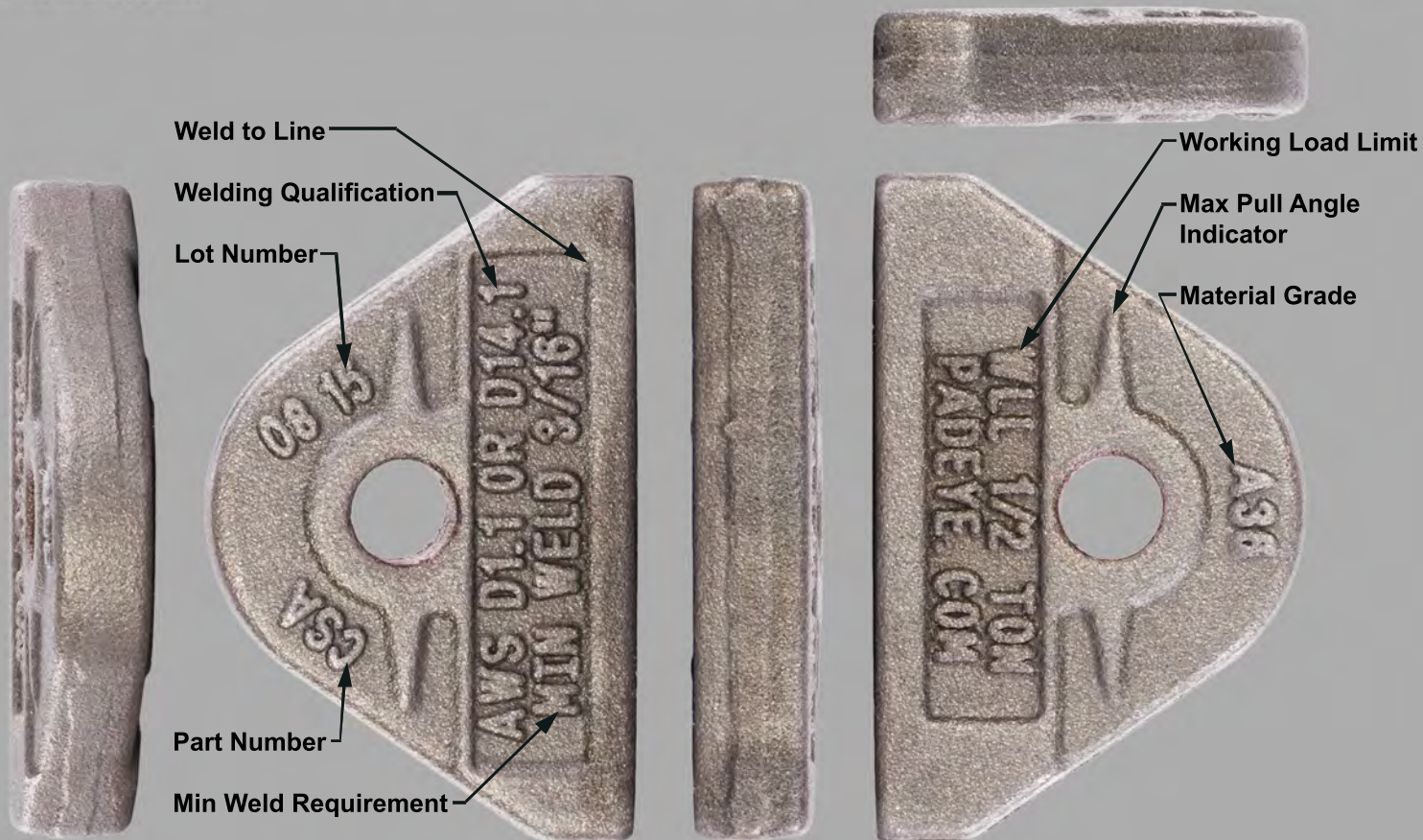
Har-Bach Marketing  
218 W. Richey Road  
Houston, TX 77090  
Telephone: +1 281 . 440 . 1725  
FAX: +1 281 . 440 . 1724  
internetsales@padeye.com  
[www.padeye.com](http://www.padeye.com)





Part No.	Shackle Size	WLL (t)	A	B	C	D	E	F	G	R	Wt. (lbs)	Min. Weld
A36 / Stainless												
CSA / SSA	1/4	1/2	21/64	11/32	2-7/64	1-3/8	3/4	5/16	N/A	5/8	0.20	0.188"
CSB / SSB	3/8	1	15/32	9/16	2-7/16	1-5/8	7/8	3/8	N/A	3/4	0.43	1/4"
CSC / SSC	7/16	1-1/2	17/32	5/8	2-3/4	1-9/16	7/8	1/4	7/32	11/16	0.43	3/16 PJP with 3/16" Fillet
CSD / SSD	1/2	2	43/64	11/16	3-1/4	2-1/8	1-1/8	7/16	5/32	1	0.83	1/4 PJP with 1/4" Fillet
CSE / SSE	3/4	4-3/4	15/16	1-1/8	4-7/16	2-5/8	1-7/16	1/2	15/32	1-1/4	2.20	5/16 PJP with 5/16" Fillet
CSF / SSF	7/8	6-1/2	1-1/16	1-5/16	5-3/16	2-15/16	1-5/8	1/2	3/8	1-5/16	3.13	7/16 PJP with 7/16" Fillet

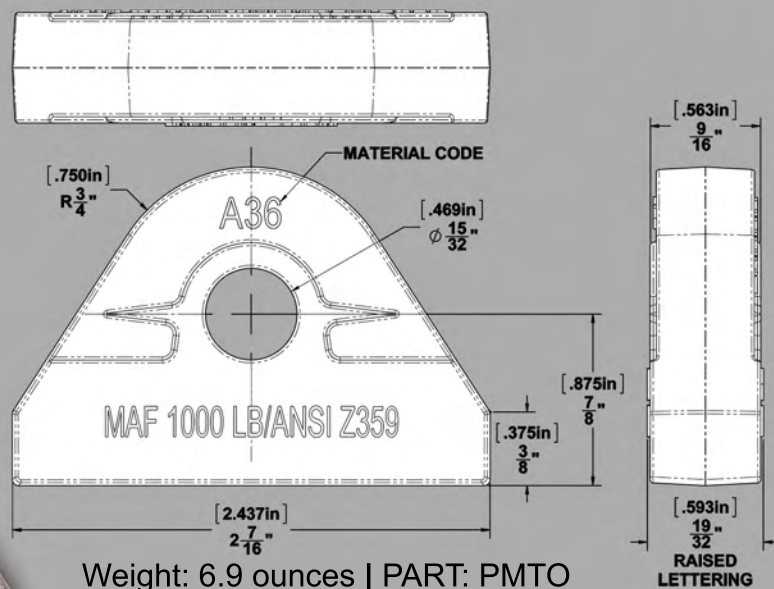
WLL = Working Load Limit





# Personal Man Tie-Off Padeye

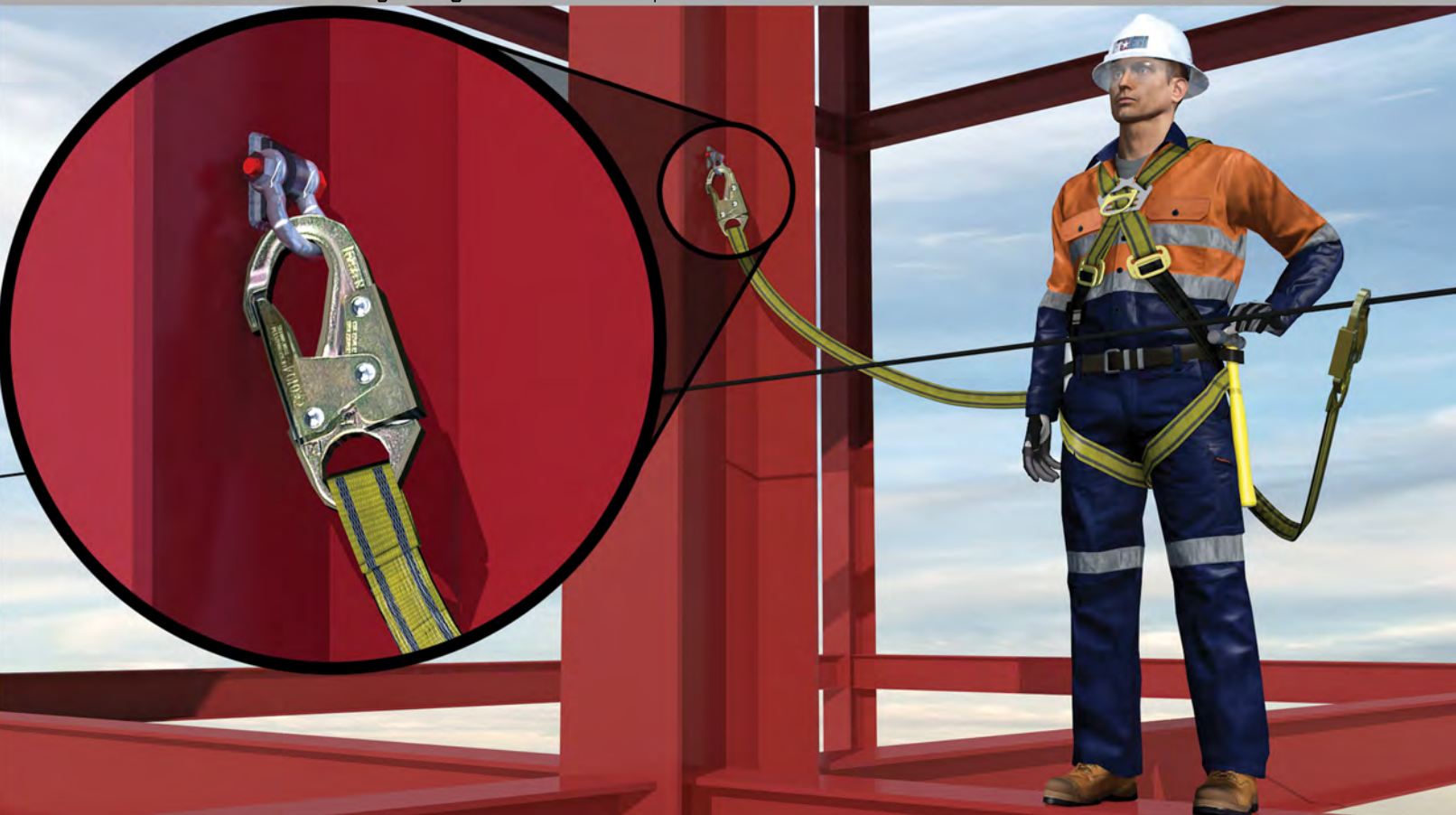
The single person Personal Man Tie-Off (PMTO) is designed in accordance with ANSI Z359 and may be used as a personal fall arrest system (PFAS) anchor point, fall restraint anchor or positioning anchor. The PMTO is used to prevent falling from heights in construction or general industry. The PMTO meets the Occupational Safety and Health Administration (OSHA) 29CFR 1926.502 load rating of up to a 310 pound person or 220 pound solid weight.



**APPLICATION:** When the PMTO is welded to a steel structure, the worker's lanyard can be attached to the shackle of the anchor point. The anchor may also be used to prevent a variety of tools from falling. The PMTO is rated for up to 220 pound solid weight.

**FEATURES:** The Padeye Anchor Connector is a small, lightweight and easy to use device which is made of quality grade forged ASTM A36 steel which will withstand the fall impact load. The Padeye Anchor Connector is designed for use with a 1 Ton ASME B30.26 shackle to withstand loading in any direction. This single point anchor system is designed to be used in all cases with an ANSI approved Self Retracting Lanyard (SRL) or energy absorbing lanyard with a Maximum Arresting Force (MAF) of 1,000 pounds.

**HOW TO USE THE PMTO:** The PMTO must only be used under the supervision of a qualified person who is trained in the use of this product in accordance with this literature. In order to meet the requirements of ANSI Z359.12, the PFAS shall have drawings and/or specifications prepared by or under the direction of an engineer. Only use one PMTO per worker. Use an ANSI approved energy absorbing or self retracting lanyard (SRL) or other ANSI approved products with a MAF of 1,000 pounds. Do not use with any leading edge SRL devices (LESRL) unless authorized by the manufacturer. Prior to each use, the PMTO must be inspected for damage, cracks or other irregularities. This includes verifying that the shackle is securely fastened and swivels freely. Prior to each use, verify that the tag shows a purchase date within two years and that the Padeye anchor has passed the monthly safety inspection. If ANY irregularities are found, do not use the PMTO, take it out of service and notify the responsible safety personnel. If the PMTO is subjected to a drop load, it must be taken out of service and inspected by a qualified person in accordance with OSHA requirements. The qualified person must ensure that the PMTO has been installed, inspected and welded in accordance with AWS D1.1 or AWS D14.1. Ensure the metal attachment and structure are strong enough to sustain an impact load.





# SPECIFICATIONS



## ADVANTAGES

- All Padeyes are forged to exacting tolerances.
- The forged hole is undersized then reamed to fit shackle pin/bolt  $\pm 0.01$ ".
- All batches have lot number stamped into each part.
- Working load limit (WLL) is stamped into each part for easy confirmation of capacity.
- Minimum weld deposit is stamped into each part according to AWS D1.1 or D14.1.
- Grade of material is stamped into each part.
- Built in gauge for minimum weld deposit stamped into each part.
- All of this is done to avoid mistakes. A quick visual inspection, then start your lift.
- A36 carbon steel or stainless steel (other alloys available upon request).



WORKING LOAD LIMIT (WLL) TABLE

Part No.	Rating		Category A WLL%	Class 0 WLL%	Category B WLL%	Class 1 WLL%	Category B WLL%	Class 2 WLL%	Category B WLL%	Class 3 WLL%	Category B WLL%	Class 4 WLL%
CSA	1/2 Ton	In Line	1,000	100	1,000	100	1,000	100	1,000	100	1,000	100
	(1,000 lbs)	45 Degree	673	67	459	46	459	46	459	46	289 F	29
		90 Degree	577	58	385	38	385	38	361 F	36	226 F	23
CSB	1 Ton	In Line	2,000	100	2,000	100	2,000	100	2,000	100	2,000	100
	(2,000 lbs)	45 Degree	1,736	87	1,184	59	1,184	59	1,184	59	1,027 F	51
		90 Degree	1,474	74	983	49	983	49	983	49	648 F	32
CSC	1-1/2 Ton	In Line	3,000	100	3,000	1000	3,000	100	3,000	100	3,000	100
	(3,000 lbs)	45 Degree	2,129	71	1,452	48	1,452	48	1,452	48	907 W	30
		90 Degree	1,845	62	1,230	41	1,230	41	1,068 F	36	668 F	22
CSD	2 Ton	In Line	4,000	100	4,000	100	4,000	100	4,000	100	4,000	100
	(4,000 lbs)	45 Degree	2,646	66	1,804	45	1,804	45	1,804	45	1,349 W	34
		90 Degree	2,281	57	1,520	38	1,520	38	1,520	38	1,245 W	31
CSE	4-3/4 Ton	In Line	9,500	100	9,500	100	9,500	100	9,500	100	9,500	100
	(9,500 lbs)	45 Degree	6,929	73	4,724	50	4,724	59	4,242 W	45	2,615 W	28
		90 Degree	6,056	64	4,037	42	4,037	42	4,037	42	2,447 W	26
CSF	6-1/2 Ton	In Line	13,000	100	13,000	100	13,000	100	13,000	100	13,000	100
	(13,000 lbs)	45 Degree	9,759	75	6,654	51	6,474	48	6,474	48	4,599 W	35
		90 Degree	8,519	66	5,679	44	5,679	44	5,679	44	4,104 W	32

Note: F = Fracture at Head W = Weld

[www.padeye.com](http://www.padeye.com)